



ZenFlex™

NiTi Rotary Shaping File

Maximum Strength. Minimally Invasive.

Featuring an ideal balance of strength and flexibility, ZenFlex lets you reach the full working length with reduced risk of breakage while preserving more tooth integrity.



High Cutting Efficiency

Designed with triangular cross section with proprietary heat treatment, ZenFlex exhibits high cutting efficiency that lets you reach the full working length of even complex root geometries.



Minimally Invasive

A maximum flute diameter of 1mm and a non-cutting tip work together to minimize transportation and preserve the tooth's structural integrity.



Exceptional Strength

Resists torsional stress and cyclic fatigue resulting in minimal breakage and reduced transportation.



Excellent Flexibility

Proprietary heat-treatment design delivers excellent controlled memory and flexibility for up to 90° curves.

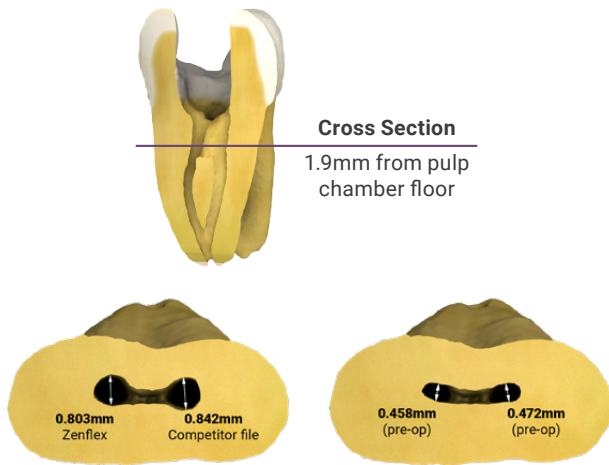


Kerr™

How ZenFlex Wins

ZenFlex has high cutting efficiency due to its triangular cross section and proprietary heat treat process that preserves the sharp cutting edge of the flute. ZenFlex also has a non-cutting tip that allows for more control during the procedure.

As seen on the image to the left, ZenFlex preserves additional tooth structure relative to key competitors. This feature is a result of the 1mm Maximum Flute Diameter (MFD) of ZenFlex which is 20% smaller than Vortex Blue®.

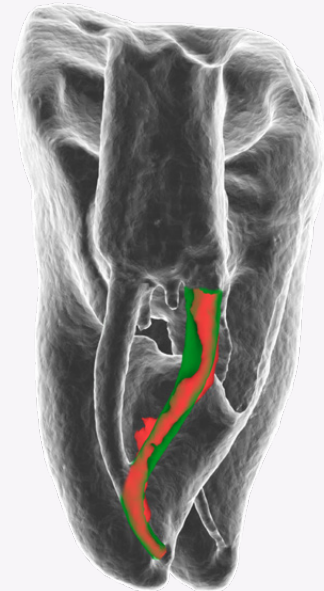


Follow the curvature. See the difference.

We invited leading endodontist Dr. Stephen L. Buchanan to put ZenFlex to the test. Dr. Buchanan found that ZenFlex is able to shape severely curved canals.

● Pre-op Canal ● Shaped canal

*CT scans taken from extracted teeth.



Customer testimonials

“ ZenFlex shaping instruments have variable-pitch flute angles that prevent them from threading into canals, provide them with enormous chip space between flutes, and help prevent tip breakage. These sophisticated instruments deliver single-file shapes without transporting canals due to their variable-heat treatment. Customizing heat treatment for each file size produces smaller files with more shape memory to prevent unwinding and larger files with remarkable ductility. It also has a 1mm maximum flute diameter in order to better maintain the structural integrity of teeth after RCT, and Kerr’s AutoFit gutta percha points fit well to the ends of canal shapes cut by ZenFlex Files. ”



Dr. Stephen L. Buchanan

Flexibility Meets Memory

Every canal anatomy is different, and some are more complex than others. Designed with proprietary heat-treatment technology, ZenFlex provides excellent flexibility for up to 90° curves.



With exceptional controlled memory, ZenFlex maintains its pre-curved shape, resulting in easier insertion into even the most challenging canal anatomies.

Introducing ZenFlex Gutta Percha Points

Your shaping procedures are about to get even smoother. Introducing our new ZenFlex Gutta Percha, the easy-to-use gutta percha product designed to match a range of ZenFlex NiTi File tip sizes and root canal procedures.



- Points that match canals shaped by ZenFlex NiTi Shaping Files
- Worry-free application, with zero natural rubber latex
- Excellent matches to a wide range of canal depths.

“ More and more during my clinical practice, I am discovering the amazing potential of the Traverse/ Zenflex system. The new heat-treatment has brought unparalleled benefits to the files and the world of endodontics. Enjoy and let you and your patients feel the difference.

First clinical case is a perfect example of the minimal invasive design of the files and how the cutting edge is preserving the original shape of the canals even in such calcified, narrow and multiple curved canals.

The second case, is a demonstration on how the variable heat treatment of the files especially the flexibility in the middle and coronal part of the files is shaping the curves. ”



Adj. Prof. Phillippe Sleiman

ZenFlex adapts to *Your* needs.

With a wide selection of tip and taper configurations

Ordering Information

ZenFlex™ - Pack of 6

Taper	Tip	21 mm	25 mm	31 mm
.04	.20	818-1206	818-1207	818-1208
.04	.25	818-1256	818-1257	818-1258
.04	.30	818-1306	818-1307	818-1308
.04	.35	818-1356	818-1357	818-1358
.04	.40	818-1406	818-1407	818-1408
.04	.45	818-1456	818-1457	818-1458
.04	.50	818-1506	818-1507	818-1508
.04	.55	818-1556	818-1557	818-1558
.06	.20	818-2206	818-2207	818-2208
.06	.25	818-2256	818-2257	818-2258
.06	.30	818-2306	818-2307	818-2308
.06	.35	818-2356	818-2357	818-2358
.06	.40	818-2406	818-2407	818-2408
.06	.45	818-2456	818-2457	818-2458
.06	.50	818-2506	818-2507	818-2508
.06	.55	818-2556	818-2557	818-2558

ZenFlex™ Gutta Percha Points - Pack of 50

Taper	Tip	30 mm
.04	.20	825-9820
.04	.25	825-9825
.04	.30	825-9830
.04	.35	825-9835
.04	.40	825-9840
.04	.45	825-9845
.06	.20	825-9920
.06	.25	825-9925
.06	.30	825-9930
.06	.35	825-9935
.06	.40	825-9940
.06	.45	825-9945

ZenFlex™ - Assorted Pack of 6

Taper	Tip				21 mm	25 mm
.04	.20	.25	.30	.45	818-1421	818-1425
	.35	.40				
.06	.20	.25	.30	.45	818-1621	818-1625
	.35	.40				

ZenFlex™ Gutta Percha Points - Assorted Pack of 60

Taper	Tip				30 mm
.04	.20	.25	.30	.45	825-9800
	.35	.40			
.06	.20	.25	.30	.45	825-9900
	.35	.40			



For added flexibility and control, **ZenFlex works with your preferred endodontic motor and handpieces.**